

Til medlemmene av Styret for **CREE - Oslo Centre for Research on Environmentally friendly Energy**

Einar Hope
Oddbjørn Raaum
Karine Nyborg
Knut Einar Rosendahl som vara for Taran Fæhn
Tor Kartevold
Guro Børnes Ringlund

Fra: Snorre Kverndokk
Kopi: Tone Ibenholt og Grete Coldevin, Forskningsrådet

Styremøte i CREE - Oslo Centre for Research on Environmentally friendly Energy

Det innkalles med dette til styremøte

25. sept. 2012 kl 15:30 – 18:30

på Lysebu, Lysebuvn. 12. 0712 Oslo

- Sak S-12/11 Møte med arbeidspakkelederne (ca 1 time)**
- Sak S-12/12 Godkjenning av innkalling og saksliste**
- Sak S-12/13 Godkjenning av referat fra forrige møte**
[Et vedlegg](#)
- Sak S-12/14 Strategiplan**
[Et vedlegg](#)
- Sak S-12/15 Kommunikasjonsplan**
[Ett vedlegg](#)
- Sak S-12/16 Budsjett for CREE 2013 inklusive eksterne prosjekter (egenfinansiering)**
[CREE Budsjett](#)
[Totalbudsjett inkl. eksterntfinansiering](#)
- Sak S-12/17 Eventuelt**
Dato for neste møte

27. mars 2012

Møtereferat Styremøte for CREE S-I.12

(Leveres til godkjenning på styremøte 02/2012 – 25. september 2012)

Referat fra styremøtet i CREE - Oslo Centre for Research on Environmentally friendly Energy, kl 10.00-12.00, 20. mars 2012, møterom 3 i Forskningsparken, Gaustadalleen 21, 0349 Oslo

Styrets medlemmer som var til stede:

Einar Hope (leder)
Erik Hernæs
Kjell Arne Brekke, vara for Karine Nyborg
Taran Fæhn
Tor Kartevold
Kjell Berger, vara for Tor Arnt Johnsen.

Forfall:

Karine Nyborg
Tor Arnt Johnsen

Fra administrasjonen:

Snorre Kverndokk (senterleder)

Fra Norges Forskningsråd (NFR):

Grete H. Coldevin (observatør)

Referent:

Snorre Kverndokk

Sak S-12/1 Godkjenning av innkalling og saksliste

Det kom et forslag om å flytte diskusjonen av Sak S-12/8: Strategiplan før diskusjonen av Arbeidsplanen for 2012 (Sak S-12/5).

Vedtak: Sak S-12/8: Strategiplan flyttes fram slik at den diskuteres før Sak S-12/5: Arbeidsplanen for 2012.

Sak S-12/2 Godkjenning av referat fra forrige møte

Det var ingen innvendinger til referatet, kun et spørsmål om rapportering (Sak S-11/3). Diskusjon om rapportering ble imidlertid tatt under Sak S-12/9: Årsrapport 2011.

Vedtak: Referatet fra forrige møte godkjennes.

Sak S- 12/3 Orienteringssaker

Senterleder informerte om følgende saker:

- Senterbyggende aktiviteter: Foredrag, frokoster, brukerpartnermøter
- EU-prosjekt: Hvordan nå EUs klimamålsettinger?
- NFR har ingen utlysning av midler vi kan søke i år
- Ny post doc finansiert av CREE: Daniel Spiro
- CREE stipend gis til to masterstudenter: Henriette Birkelund og Christina Beisland
- Brukerkonferansen om klimaavtaler og klimapolitikk arrangeres sammen med CICEP
- Det vil være et seminar om Energiutvalgets innstilling 30. mai

Vedtak: Saken ble tatt til orientering.

Sak S-12/4 Framdriftsrapportering 2011

Det var ingen kommentarer til framdriftsrapporteringen.

Vedtak: Framdriftsrapporteringen tas til etterretning.

Sak S-12/5 Arbeidsplan for 2012

Arbeidsplanen for 2012 er godkjent av NFR. Det kom imidlertid ønsker om endringer i arbeidsplanen for 2013:

- Lag et mer overgripende avsnitt i begynnelsen av planen
- Få inn litt mer om brukerinvolvering

Det legges opp til en prosess i høst hvor styret involveres litt mer i arbeidet med en ny arbeidsplan. Bl.a. inviteres alle arbeidspakkelederne på neste styremøte.

Vedtak: Arbeidsplanen tas til etterretning.

Sak S-12/6 Regnskap for 2011

Det vil ikke være en egen revisjon av CREEs regnskap da det inngår i Frischsenterets regnskap som et eget prosjekt.

For 2013 etterlyser styret et regnskap hvor også eksterne prosjekter er med (senterets egenfinansiering). I vedlegg A2 i Årsrapporten finnes et slikt regnskap med aggregerte tall.

Vedtak: Regnskapet for 2011 godkjennes.

Sak S-12/7 Budsjett for 2012

Budsjettet for 2012 er tidligere sendt til styreleder som har godkjent det etter fullmakt.

Vedtak: Budsjettet tas til etterretning.

Sak S-12/8 Strategiplan

Denne saken ble drøftet før Sak 12/5.

Tor Kartevold hadde på forhånd sendt noen merknader til strategiplanen til styreleder og senterleder. Det ble en lengre diskusjon om hva strategiplanen bør inneholde noe som ble oppsummert av styreleder til slutt. I hovedsak inkluderte dette:

- En konkretisering av hvordan aktivitetene skal gjennomføres.
- Mer om brukermedvirkning og hvordan man skal få en tettere dialog om problemstillinger.
- Utviklingsprofilen for de første 3 årene, spesielt når det gjelder volum, portefølje og finansiering.
- Nærmere om synergier og tverrfaglighet under arbeidspakkene. Det er viktig å sørge for at CREE ikke blir et tomt skall, slik at alt foregår i basismiljøene uten noen fellesaktiviteter, men blir et aktivt fagmiljø.
- Mer om metoder og relevans.
- Styrets rolle.

Neste utkast av strategiplanen sendes ut for kommentarer før neste styremøte. Denne versjonen skal skrives på engelsk.

Det inviteres til et innspillsseminar med brukerne til høsten.

Vedtak: Det sendes ut en ny versjon av strategiplanen for kommentering før neste styremøte. Det legges opp til et innspillsseminar med brukerne til høsten.

Sak S-12/9 Årsrapport 2011

Styret var fornøyd med årsrapporten og foreslo kun mindre endringer.

Det er et ønske om å splitte opp publikasjonene på de ulike arbeidspakkene i vedlegg A3.

Vedtak: Årsrapporten for 2011 ble godkjent med de merknader som fremkom i møtet.

Sak S-12/10 Eventuelt

Det er ønsket om å invitere alle arbeidspakkelederne til neste styremøte. Dette blir da ca en time lenger og legges i etterkant av forsker-workshopen til høsten.

Til neste styremøte ønsker styret en oversikt over alle eksterne CREE-prosjekter (egenfinansiering).

Møtet ble avsluttet kl 12.00

Nestet møte: Tirsdag 25. september ca kl 15:30-18:30 (etter workshopen)

Einar Hope

Erik Hernæs

Kjell Arne Brekke

Taran Fæhn

Tor Kartevold

Kjell Berger

Strategic Plan for CREE – Oslo Centre for Research on Environmentally friendly Energy

This strategic plan is intended as a long-term management document for CREE. Below we describe the general vision, aims and strategy for the center with an emphasis on the three first years of activity, i.e., from 2011 to summer 2014.

1. Vision

The center has the following vision:

- We want to be a leading international research centre within energy, environmental and resource economics.
- We will generate knowledge that can contribute to a cost-effective and sustainable exploitation of Norwegian and international energy resources by industry and governments, as well as an effective and fair climate and energy policy, both nationally and internationally.
- We will contribute to recruitment and training at the master, doctoral and post doctoral levels in energy and environmental economics at the University of Oslo. Recruiting women to research will have a particular focus.

2. Aims

The center's aim is to satisfy the Research Council's success criteria for the FME Centres for Social Science-related Energy Research (FME Samfunn). These criteria are documented in the governing documents from the Research Council ("Requirements and Guidelines" and "Information for applicants for the announcement of the Research Centres of green energy within the social sciences (FME Society)"). Thus, we adopt these criteria as CREE's long term aims:

Research activity

- The centre has a distinct research profile, conducts long-term, thematically relevant research of high international calibre in the field specified in the project description, and demonstrates this through its production of doctorates, scientific publications, papers for presentation at recognised international conferences and other measures of scientific excellence.
- The centre utilises a multidisciplinary approach in its research activities; i.e. it forges close links between various subject areas within the field of social science. The centre also strengthens the links between social science-related energy research and technology-related energy research.
- Researchers from the host institution and research partners participate actively in the centre's research.

Relevance and benefit to users

- The centre participates visibly in national and international arenas in which energy and climate-related questions are discussed.

- The centre has implemented measures to ensure that the expertise and results achieved by the research activity are effectively transferred to and utilised by the user partners, and actively disseminates research results to broader user groups and the public at large.
- The centre has achieved reciprocal mobility of staff between the centre's partners.
- The centre's user partners have increased their research commitments over time through participation in the centre's activities.

Internationalisation

- The centre has been successful in achieving recognition at the international level (e.g. researchers associated with the centre have received awards or been invited to be keynote speakers at international conferences).
- The centre has been successful in international research cooperation, e.g. as a player under the EU's framework programme.
- The centre engages in active and binding collaboration with international research groups and has contributed in other ways to the internationalisation of Norwegian research. The centre has at least one recognised international partner.
- The centre attracts outstanding international researchers, including research fellows and senior staff, as visiting researchers.

Researcher training and recruitment

- The centre has an effective framework in place for researcher training, and helps to train highly skilled personnel in the centre's areas of specialisation.
- The centre is actively engaged in education, especially at the master's and doctoral levels, and promotes recruitment to the centre's subject areas, including increased recruitment of women.

Partners and funding

- The centre receives long-term funding from the host institution and partners.
- Active efforts are made to attract new partners.
- The centre has been successful in securing other external funding.

Organisation

- The centre has a visible profile, a strong identity and a successful collaboration with its partners.
- The centre is organised in a manner that is well adapted to the host institution's organisation.
- The centre has a board and management which ensure that the intentions and plan for the centre are followed up.
- The centre has a common administration with a high degree of scientific and administrative autonomy.

3. Partners and cooperation

A major aim of CREE is to facilitate cooperation between the research partners, as well as with researchers in other countries and in other disciplines. Such cooperation is essential for reaping economies of scale and scope and for realizing the research ambitions set out above. Establishing and maintaining cooperation between researchers across different institutions, different countries and, especially, different disciplines, is very demanding. It requires an institutional framework, a well-functioning administrative apparatus and sufficient funding for bringing researchers together. Below we detail how CREE will contribute to overcoming

hurdles to successful cooperation, as well as bringing other benefits, such as more systematic contact with users and recruitment of researchers to the field.

The three national research partners of CREE constitute a large share of the researchers working in the field of environmental and energy economics in Norway. At the same time, each of the institutions has its own unique competence. The Department of Economics has its main strength in theoretical research and the Frisch Centre in modeling international energy markets, whereas the Research Department at Statistics Norway has long experience in developing large macroeconomic and energy market models. All the partners have considerable experience with empirical research, and both the Frisch Centre and the Research Department at Statistics Norway have built a strong competence in the analysis of Norwegian register and survey data. Also, the Frisch Centre and the Department of Economics run a laboratory for experimental economics.

While there is already cooperation among the Norwegian partners, CREE will facilitate a deepening of this by providing resources and an organizational structure for collaboration both within the community of economists and with the wider research community. The field of energy and climate is naturally multidisciplinary, making it important for CREE to be closely integrated with researchers in other social sciences, law and technology. As multidisciplinary research is more resource demanding than research within a given discipline, CREE will be an important factor for success in this respect.

CREE will be part of MILEN, the University of Oslo's interfaculty research network on environmental change and sustainable energy. To facilitate interfaculty and interdisciplinary research, MILEN aims to improve the competence of university researchers in working across disciplines, and will organize cooperation at workshops, seminars and conferences, as well as through the development of multidisciplinary courses at the PhD and master's level. We will work together with MILEN to organize seminars and workshops, and present our PhD students and researchers to the multidisciplinary environment and methods that MILEN represents.

Researchers from MILEN will also actively participate within CREE. From the network, we will draw on researchers from social anthropology, law and political science. From the discipline of social anthropology, SUM – the Centre for Development and the Environment, will participate. The center has long experience on topics related to sustainable consumption, which is relevant for understanding behavior when evaluating policy instruments. In addition, we will work closely with the research group in Natural Resources Law at the Faculty of Law. The group's activities are multidisciplinary and comprise research on natural resources, energy, environment and property. Law expertise is crucial in gaining an understanding of topics studied at CREE such as international energy and climate policies, innovation and policy instruments. Further, to achieve a better understanding of politics, political science is important. Since the political scientists in the MILEN network are involved in CICEP (Strategic Challenges in International Climate and Energy Policy) another FME funded by the Research Council, we have agreed with CICEP to establish a formal cooperation between the two centers, which means arranging joint workshops, seminars and graduate courses. This may also lead to joint research papers. Lastly, we are also in contact with the Department of Psychology. We share a common interest in behavior economics, and hope that they will be a discussion partner on our future research in that field.

Collaboration with experts on technology is also important if we want to perform relevant energy research. Therefore, we have engaged SINTEF Energy Research and IFE (Institute for Energy Technology) as subcontractors. SINTEF Energy has a long experience in modeling electricity markets and IFE possesses a deep knowledge about different technologies, e.g., through their development and use of the energy system models MARKAL and TIMES, which have been developed in a cooperative multinational project over a period of almost two decades by the Energy Technology Systems Analysis Programme (ETSAP) of the International Energy Agency (IEA). SINTEF Energy, IFE and the University of Oslo are already involved in existing technology FME centers. Based on these channels, we will keep in contact with these centers to be informed about the latest international trends within technological development and the energy markets.

Tilburg Sustainability Center (TSC), a new multidisciplinary center hosted by Tilburg University, working on topics such as environmentally friendly energy, innovation and international environmental agreements, is engaged as our international partner. While the national partners have collaboration with researchers at TSC, CREE will strengthen and extend this contact, as well as give Norwegian researchers access to the multidisciplinary sustainability network in Tilburg and give Dutch researchers access to the Norwegian network. The ambition of TSC is to become a leading international center for scientific expertise in the field of sustainability, in addition to providing support to companies, governments and other organizations. The cooperation with the Norwegian partners may help both centers to become internationally leading in their respective fields.

The resources and the organization of CREE will also make it easier to maintain better contact with the users of energy and environmental research. This requires resources in the form of regular meetings, conferences, and other interaction, all of which will be provided by CREE. The organizational structure of CREE will also establish a formal meeting point with our user partners. These represent industry and government and include Gassnova, Norwegian Climate and Pollution Agency, Norwegian Ministry of Petroleum and Energy, Norwegian Water Resources and Energy Directorate, Statkraft Energy, Statnett and Statoil. All the user partners possess knowledge on energy markets and climate issues that are very relevant for our research. The plan is to have a two-way communication with the user partners so that both user and research partners can gain.

An additional value added to the center is that funding over an eight-year period allows for the possibility of long-term planning. This is particularly important when it comes to recruitment to the field.

4. Organization of research

CREE will focus on research mainly connected to renewable energy and climate issues. The aim is to have a broad research portfolio and to work with all of the issues mentioned in the announcement from the Research Council of Norway. This makes us more open to include good ideas that come up and to employ good people within the field.

The research is organized in five different working packages, for more details see the *Project Plan (revised proposal to the Research Council of Norway)* and the *Annual Work Plans*:

- Working Package 1: The International Politics of Climate and Energy
- Working Package 2: Innovation and Diffusion policy

- Working Package 3: Regulation and Market
- Working Package 4: Evaluation of Environmental and Energy Policy Measures
- Working Package 5: The Next Generation of Numerical Models

Our research will be based on a broad set of methodologies. We will conduct theoretical analyses and empirical studies. The partners have specialized expertise which will be merged within the various parts of the research. Both the theoretical and empirical studies will be anchored in microeconomics, but will also draw on perspectives from other social sciences. On the empirical side, the research will be based on numerical economic models, econometric studies in which we make use of our large datasets, qualitative analyses of different cases and laboratory experiments. We will bring together researchers from various fields, who will be engaged in multidisciplinary activities such as conferences and workshops in addition to working on projects.

The output from CREE will be directed at both the research community and potential users including user partners and a broader interested public. CREE will introduce a new working paper series in which our research partners will publish their works. Furthermore, all of our research partners have a long tradition in presenting research at international conferences and publishing papers in peer-reviewed journals, and we will continue this tradition. We will also focus on popular publications such as newspaper articles, policy notes and popular science journals, as communication with users is important for scientifically based policy making.

While the Frisch Centre is the host institution of CREE, all national research partners are involved in directing the different working packages to. For more details about the different working packages, see the project descriptions.

5. Strategies to obtain the aims of the center

5.1 Research activity

CREE has a distinct research profile described in the *Project plan* and *Annual work plans*. The long-term funding ensures that we can plan large projects that build on each other. The multidisciplinary approach is taken care of via collaboration with our sub contractors.

While the main research profile of the center is outlined in the above mentioned documents, more detailed projects will develop as a result of the general progress of research in the field, international collaboration, the competence of the researchers connected to the center, discussions with user partners and political and industrial developments. This will require meeting places for researchers and also for researchers and user partners.

All research partners already encourage their researchers to participate in the international research community, to collaborate with other researchers nationally and internationally, to publish in international peer-reviewed journals, and to be active in popular and/or user-oriented dissemination. The center has thus not established additional strategies for publishing, attending conferences etc. that go beyond those of the different research partners. We will encourage our researchers to attend relevant conferences such as those of the EEA, EAERE and IAEE. A main aim is to continue to publish in good international journals, in addition to other publications such as books. We do not, however, focus on quantitative goals for publications, as research quality is considered more important than output quantity. The quality will be ensured with extensive contact with the international research community via

publications, conferences, workshops and collaboration.

To facilitate cooperation among the research partners and also among research partners and sub-contractors, we will organize several activities:

- An annual research workshop that includes presentations from researchers from the different research partners, subcontractors and other researchers connected to CREE. This will be held in September each year.
- A seminar series that will be coordinated with the seminar series at Department of Economics, Frisch Centre and Statistics Norway. This will be held continuously during the year.
- Exchange of researchers among research partners for longer or shorter periods of time.
- CREE has a web-page that is always updated on CREE activities.
- A CREE working paper series has been established electronically.
- Regular breakfasts and lunches where CREE researchers meet and exchange information.
- Social activities such as summer party and “julegløgg”.

5.2 Relevance and benefit to users

One of the basic requirements of the center is that the research must be relevant, both for our users, but also for the international research community on environmental and energy economics. While the latter is included in our research strategy, the first will be ensured through regular contact with user partners and other users. Increased communication will also provide an incentive to policy relevant research.

As mentioned above, the resources and the organization of CREE will make it easier to maintain better contact with the users of energy and environmental research. This means regular meetings, conferences, and other interaction where we can have a two-way communication with our users. CREE has a responsibility for research dissemination, both to users and to the public. We will use the following communication channels:

Communication to users:

- Dissemination of research through the Web
- Hold an annual user conference (April). This will be organized together with CICEP.
- Organize user activities such as meetings and seminars as required
- Organize a Model Forum (once or several times a year) where users together with researchers in other disciplines, can make contributions to economic modeling.
- Publish in Norwegian-language journals such as *Samfunnsøkonomen* and *Økonomiske analyser*.

In addition to this, researchers from CREE should be available for meetings with user partners to discuss relevant topics. User partners may also fund research projects directly that are of high relevance to them.

The user partners can contribute to the research activities by, e.g.,

- Contribute with data
- Contribute with funding
- Contribute to discussions around modeling (e.g., in the Model Forum)
- Comment on research and suggest research tasks

- Participate at seminars and conferences organized by CREE

The user partners will also contribute to the governance of the center as two representatives in the board should come from user partners (see under organization below).

Communication to the public:

- We will publish opinion pieces, feature articles, interviews and policy commentaries on our website under "CREE in the media". These can be in Norwegian or English.
- We will contribute to hearings in the Parliament and public debates.

CREE will make a *Dissemination plan* that goes more into detail on this topic.

5.3 Internationalization

In addition to the usual research channels such as collaboration on projects, publishing, presentations at conferences, etc., CREE formalizes its international contacts through

- An international research partner (Tilburg Sustainability Center). We will aim for collaboration, discussions and exchange of researchers for short time periods.
- Employing internationally recognized researchers in part time positions at all three national research partners (see also the Project Plan)
- Invite renowned researchers to our workshops and to hold PhD courses.
- Actively participate in applications for EU funding.

CREE will participate in EU-projects as a partner. However, we do not intend to lead EU-projects as this requires a much larger administration than what we have established. Studies based on our numerical models are particularly relevant for EU-projects.

5.4 Researcher training and recruitment

CREE will fully fund two PhD students and two post-doctoral researchers over an eight year period. This means that we will recruit a PhD student in 2011 and 2015 respectively, as well as post-doctoral researchers in 2012 and 2016. These research recruits will be employed by the Department of Economics. In addition, the other research partners will also employ research assistants and research recruits. The research recruits will be given supervision by their supervisors and project leaders and will be invited to the ordinary CREE activities.

CREE will contribute to an interest in environmental and energy economics by providing up to three scholarships annually to students who want to write a master thesis in the field.

Researchers from CREE will teach at the master's and doctoral program at the Department of Economics as well as the summer school at the University of Oslo, and supervise master students and doctoral candidates.

CREE supports MILENs Research School, an interdisciplinary research school at the University of Oslo in environment and energy, both financially and through organizing and teaching courses and seminars.

CREE supports the national research school in renewable energy for all the FME centers; NorRen. This means that we help organizing courses and seminars.

CREE also want to contribute to the exchange of PhD candidates among our research partners and also with other international collaborators.

5.5 Partners and funding

CREE will actively work to increase funding for the center's activities through

- User Partner Funding
- Search external research funding from the Norwegian Research Council and other external sources such as the EU's framework program.

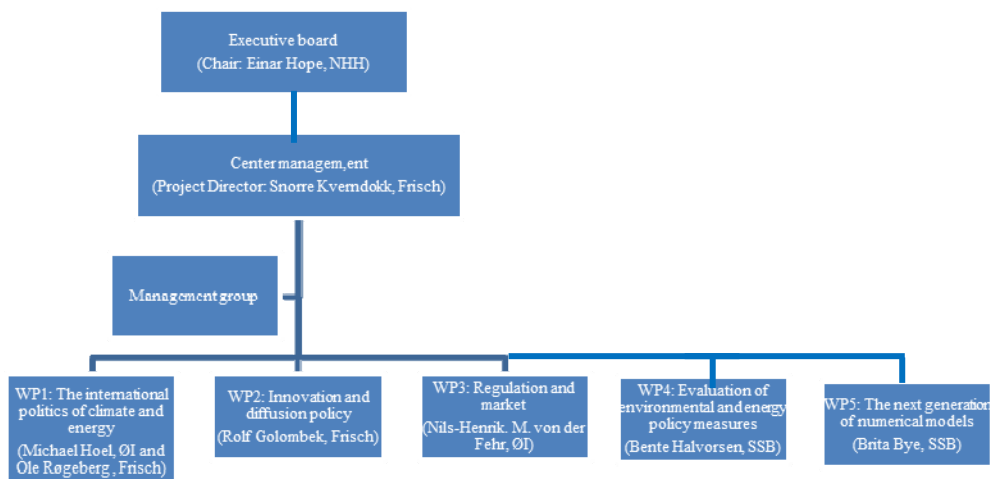
5.6 Organization

The organization of the center in 2011 is as shown in the figure below. It is also described in a separate document in Norwegian (*Styringsstruktur – CREE*).

The chair of the executive board should not represent any of the research partners, user partners or sub-contractors, and is therefore independent of the partners in CREE. The board also consists of one member from each of the three Norwegian research partners, while the user partners should be represented by two members, one from industry and one from government.

The board has the overall responsibility for the direction of future research activities, including adoptions of research issues and potential modifications of the working packages. The board is also responsible for constructive interaction between the center, the host institution and partners in the consortium. More precisely, the board is responsible for ensuring that the Center's vision and activities formulated in the Strategy document, are followed up in key documents such as project and work plans as well as budgets. This means adoption of the strategic plan, annual work plan, annual report, progress reports, budget, and approve the accounts.

The administration of CREE is located at the Frisch Centre. It should have regular meetings with the management group consisting of all the working package leaders to discuss matters of importance for the center.



6. Focus the first three years, 2011-14

The center will continuously work to meet the vision and aims of this strategic plan, also during the first three years of the center's activity.

However, in the beginning we will particularly focus on getting the organization in place, such as all the formal contracts and documents, creating collaborative relationships, set up a seminar series, workshops and conferences, work to create a center identity, and to ensure a stable funding.

CREE is working to improve center identity through

- Regular lunches / breakfasts
- Seminar series and other professional events
- Own website
- Social events
- Opportunities for exchange of scientists for shorter or longer periods
- Visits to the user partners.

When it comes to funding, the “fixed costs” of running the centre such as administration, PhD students, post docs, sub contractors and external part time positions, take a large part of the base funding from the Research Council of Norway. Thus, the aim is to increase external funding to be able to ensure a stable funding of the research activity of the senior researchers. We do not aim to expand the center much, but we plan to keep up a steady recruitment to the field of energy and environmental economics.

When it comes to research, one main activity during the first three years is to build our numerical models to make them available for studying important research questions. As a mean to do this, we have set aside NOK 1,000,000 each year for numerical modeling. We also have a large activity on WP1 (The International Politics of Climate and Energy) in the first phase of the center, which is mainly due to existing funding from research council programs. The plan is that the funding of the different working packages will be more even after three years. We do not intend to expand the number of working packages, but new ideas will

always come up that will be included under the existing umbrella of working packages. Good communication with user partners and sub-contractors within the meeting places established by the center will be important for the generation of research ideas.

The main challenge for the first phase of the center activity is to make the different research partners and subcontractors work together, and to ensure a useful interdisciplinary relationship with our subcontractors. They are now involved in different projects, and we will have an annual internal evaluation of the cooperation in order to make the projects work smoothly.

It is important to include user partners in a way that is to a mutual advantage of both the research and user partners. A good communication with the user partners through meetings, seminars and conferences is required to make this happen. During to 2012 the Project Director and researchers will have meetings with all user partners to discuss their needs and their involvement in the center. Based on feedbacks from user partners, we will revise communication plans.

This strategic plan will be revised after three years.

August 2012
Draft

Communication plan for CREE

Aim and target

As funded by public means mainly through the Research Council of Norway (RCN), CREE has a responsibility for research dissemination, both to users and to the public.

One of the aims of CREE is to generate knowledge that can contribute to a rational, cost-effective and sustainable exploitation of the Norwegian and international energy resources as well as an effective and fair climate and energy policy both nationally and internationally. Thus, we want to influence energy and climate policies by providing research results and factual information. This information may hopefully also be useful to industrial users that operate in energy markets.

The main users of CREE are, in addition to the research community, industry, Government and the general public. However, our knowledge may also be helpful for RCN in their priorities of future research.

Means

We will use the following communication channels:

Communication to users:

- Dissemination of research through our webpage (*cree.uio.no*)
- Hold an annual user conference (April). This will be organized together with CICEP.
- Organize user activities such as meetings and seminars
- Organize a Model Forum (once or several times a year) where users together with researchers in other disciplines, can make contributions to economic modeling.
- Publish in the Norwegian-language journals such as *Samfunnsøkonomen* and *Økonomiske analyser*.

In addition to this, researchers from CREE should be available for meetings with research partners to discuss relevant topic. User partners may also fund research projects directly that are of high relevance to them.

Communication to the public:

- We will publish opinion pieces, feature articles, interviews and policy commentaries on our website under "CREE in the media". These can be in Norwegian or English.
- We will contribute to hearings in the Parliament and public debates.

Strategy

We have chosen not to quantify the different communication results, as it is very hard to know what a satisfying level is, and also as invitations to public debates and the Parliament etc are not up to us to decide. However, several incentives have been made. We have introduced minor prizes for media coverage and newspaper articles in order to give incentives for this.

This also works in the way that the researchers have an incentive to report media communication to the CREE administration.

For the first 6 months of 2012, we have about 30 units on our “CREE in the News” page on the webpage, which we find to be satisfactory level. Thus, one aim may be to keep up this level of media publications in the future.

We will evaluate the communication strategy every year to see if incentives should be revised or if other incentives should be introduced.

BUDSJETT, tusen kroner	2012		2013
	Budsjett	Prognose	Budsjett
Post			
INNTEKTER			
Forskningsrådet	8 708	8 708 ¹	8 000
UiO	500	500	500
Sponsorer	600	600	600
Udisponert fra året før	-72	-72 ²	70
Inntekter i alt	9 737	9 737	9 170
UTGIFTER			
Administrasjon	1 494	1 539 ³	1 655
Konferanser	300	290	300
PhD og Post Doc	1 147	1 147	1 567
Masterstipendier	60	0 ⁴	40 ⁴
Frisch - forskning	2 381	2 405	1 612
SSB - forskning	1 641	1 641	1 538
ØI - forskning	1 095	1 095	956
TSC	250	250	250
Underleverandører	1 300	1 300	1 300
Totalt	9 668	9 667	9 218
Udisponert	68	70	-48
UTDELING TIL FORDELING NASJONALE PARTNERE OG UNDERLEVERANDØRER			
Frisch	5 079	5 078	4 494
SSB	1 641	1 641	1 538
ØI	1 398	1 398	1 636
TSC	250	250	250
Underleverandører	1 300	1 300	1 300
Sum partnere og underleverandører	9 668	9 667	9 218

FORDELING PÅ DE ULIKE POSTENE

Administrasjon

- senterleder	857	867	941
- sekretær	591	591	634
- styret	25	25	25
- utvikle web-verktøy	0	0	0
- diverse utgifter	20	55 ³	55
Konferanser	300	290	300
PhD og Post doc	1 147	1 147	1 567
Mastergradsstudenter			
- Stipendier	60	0 ⁴	40 ⁴
Frisch - forskning			
Eksterne II-ere			
- Carbone	69	69	71
- Strøm	192	192	198
- Programmerer Strøm	20	20	0
- Fæhn			143
Øremerket pott til modellarbeid	662	685	400 ⁵
Øvrige forskermånedsværk	1 439	1 439	800
SSB - forskning			
Eksterne II-ere			
- Liski	67	67	69
- Böhringer	67	67	69
Øremerket pott til modellarbeid	391	391	600 ⁵
Øvrige forskermånedsværk	1 116	1 116	800
ØI - forskning			
Interne II-ere			
- von der Fehr	351	351	378
- Før Sund	159	159	164
- Harstad	159	159	164
- Hoel	175	175	181
Eksterne II-ere			
- Baldursson	67	67	69
Øremerket pott til modellarbeid	0	0	0 ⁵
Øvrige forskermånedsværk	184	184	0
TSC	250	250	250
Underleverandører	1 300	1 300	1 300
Totalt utgifter	9 668	9 667	9 218

Noter:

- 1 NFR utbetaler etter forbruk, såfremt det ikke overstiger tildeling. Dvs. at bruker man mindre enn det man har avtalt med NFR, vil man ikke få utbetalt hele beløpet. Man kan forvente å få dette året etter.

Det resterende beløpet for 2011 på NOK 708 000 er overført til 2012. Dette er fordelt til forskerårsverk i SSB og Frisch i tillegg til frikjøp på ØI.
- 2 Underskuddet for 2011 skyldes at det er kommet reiseutgifter og andre fakturaer etter at regnskapet ble sendt til NFR.
- 3 Differansen mellom budsjett og prognose for 2012 skyldes utgifter i forbindelser med CREE frokost, brukerbesøk, andre møte utgifter pluss andre småutgifter.
- 4 De ble utdelt 2 stipendier i 2012 som blir utbetalt i 2013
- 5 Modelpotten for 2013 er fordelt mellom utvikling av LIBEMOD og omlegging til en GAMS-basert MSG-versjon.

FINANSIERINGSPLAN

Prosjekt	Type	Prosjekt eier	2012		2013			
			Bud. i kontrakt	Tildelt	Bud. i kontrakt	Tildelt		
TOTALT								
Forskningsrådet			8 709	8 709	8 000	8 000		
Egenfinansiering			13 700	19 083	11 200	5 662		
Offentlig finansiering			500	500	500	500		
Privat finansiering			600	600	600	600		
Internasjonale midler			250	1 227	250	1 977		
Sum total finansiering			23 759	30 118	20 550	16 739		

Detaljert**Forskningsrådet**

CREE - FME Samfunn	NFR	Frisch	8 709	8 709	8 000	8 000		
Sum forskningsrådet			8 709	8 709	8 000	8 000		

FINANSIERINGSPLAN

Prosjekt	Type	Prosjekt eier	2012		2013	
			Bud. i kontrakt	Tildelt	Bud. i kontrakt	Tildelt
Egenfinansiering						
PETROSAM: Petroleum industry research in economics and economic management	NFR	Frisch		1 677		0
Export of Natural Gas from Russia	NFR	Frisch		317		112
SAMFUNN: Norms, green agents and environmental policy	NFR	Frisch		750		0
Managing Thresholds and Uncertainty in Resource Economics	NFR	Frisch		3 109		0
Intergenerational and intragenerational equity in climate policy	NFR	Frisch		1 790		1 200
Improving international cooperation on emission abatement	NFR	Frisch		1 826		0
Managing Risk in Climate Change - A Dynamic Perspective	NFR	Frisch		1 864		0
Intergovernmental Panel on Climate Change	NFR	Frisch		150		150
PETROSAM: Petroleum markets	NFR	SSB		800		
RENERGI: Diffusion of climate technologies	NFR	SSB		2 500		1 100
RENERGI: Household response to multiple environmental policy instruments	NFR	SSB		1 200		1 000
Frie midler: Sustainable biofuels	NFR	SSB		1 300		
MSG-kontrakten med Finansdepartementet		SSB		400		400
Uspesifisert/Egenandel		SSB		400		700
Uspesifisert/Egenandel		ØI	500	1 000	500	1 000
Sum egenfinansiering			13 700	19 083	11 200	5 662
Offentlig finansiering						
CREE - FME Samfunn	UiO	Frisch	500	500	500	500
Sum offentlig finansiering			500	500	500	500
Privat finansiering						
CREE - FME Samfunn	Statoil	Frisch	250	250	250	250
CREE - FME Samfunn	Statnett	Frisch	250	250	250	250
CREE - FME Samfunn	Statkraft	Frisch	100	100	100	100
Sum privat finansiering			600	600	600	600

FINANSIERINGSPLAN

Prosjekt	Type	Prosjekt eier	2012		2013	
			Bud. i kontrakt	Tildelt	Bud. i kontrakt	Tildelt
Internasjonale midler						
Uspesifisert/Egenandel		Tilburg	250	250	250	250
Nordisk energiforskning		SSB				750
ENTRACTE: EU-midler	EU	Frisch		977		977
Sum internasjonale midler			250	1 227	250	1 977

1. Gjennomsnittlig tildeling per år